

Standard Viper Die Configuration

Additional Charges: By Factory Quotes

A-B-G. Blank size other than listed.

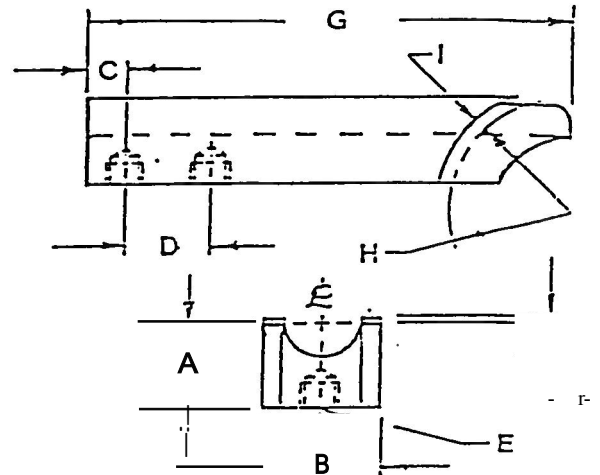
F. Captive lip extension.

I. Special clearance.

J. Reverse or standard Interlock.

Price includes two mounting holes. Special mounting may require a factory quotation.

If there are differences, let us know what they are:



Tube OD	Blank Size			Tube OD	Blank Size		
	A	Ji.	Q		A	Ji.	Q
.000-.562	.75	.75	6.0	3.001-3.500	3.00	5.00	14.0
.536-.875	1.00	1.25	8.0	3.501-4.000	3.00	5.00	14.0
.876-1.375	1.25	2.00	8.0	4.001-4.500	3.50	6.00	14.0
1.376-1.875	1.50	2.50	8.0&12.0	5.001-5.500	4.00	7.00	14.0
1.876-2.375	2.00	3.00	8.0&12.0	5.501-6.000	4.00	7.00	14.0
2.375-2.625	2.50	4.00	8.0&12.0	6.001-6.625	5.00	8.00	18.0
2.625-3.000	2.50	4.00	12.0	6.626-8.625	6.00	10.00	20.0