

## TOOLS FOR BENDING "H" TYPE MANDRELS IN STOCK READY FOR SHIPMENT

OD	WALL	CHROME	AMPCO	SHANK LENGTH	THREAD
0.375	0.028	X	X	3"	TEN-24
0.375	0.035	X	X	3"	TEN-24
0.5	0.028	X	X	4"	.312-18
0.5	0.035	X	X	4"	.312-18
0.5	0.049	X	X	4"	.312-18
0.625	0.028	X	X	4"	.312-18
0.625	0.035	X	X	4"	.312-18
0.625	0.049	X	X	4"	.312-18
0.75	0.028	X	X	6"	.375-16
0.75	0.035	X	X	6"	.375-16
0.75	0.042	X		6"	.375-16
0.75	0.049	X	X	6"	.375-16
0.75	0.065	X	X	6"	.375-16
0.875	0.028	X	X	6"	.375-16
0.875	0.035	X	X	6"	.375-16
0.875	0.049	X	X	6"	.375-16
0.875	0.065	X	X	6"	.375-16
1	0.028	X	X	8"	.625-11
1	0.035	X	X	8"	.625-11
1	0.049	X	X	8"	.625-11
1	0.065	X	X	8"	.625-11
1.25	0.028	X	X	8"	.625-11
1.25	0.035	X	X	8"	.625-11
1.25	0.049	X	X	8"	.625-11
1.25	0.065	X	X	8"	.625-11

OD	WALL	CHROME	AMPCO	SHANK LENGTH	THREAD
1.5	0.028	X	X	8"	1.0-8
1.5	0.035	X	X	8"	1.0-8
1.5	0.049	X	X	8"	1.0-8
1.5	0.065	X	X	8"	1.0-8
1.5	0.083	X	X	8"	1.0-8
1.625	0.049	X	X	8"	1.0-8
1.625	0.065	X	X	8"	1.0-8
1.75	0.035		X	8"	1.0-8
1.75	0.049	X	X	8"	1.0-8
1.75	0.065	X	X	8"	1.0-8
1.9	0.049		X	8"	1.0-8
1.9	0.065		X	8"	1.0-8
2	0.035		X	8"	1.0-8
2	0.049	X	X	8"	1.0-8
2	0.065	X	X	8"	1.0-8
2.25	0.049	X		8"	1.0-8
2.25	0.065	X	X	8"	1.0-8
2.5	0.049	X	X	8"	1.0-8
2.5	0.065	X	X	8"	1.0-8
3	0.049		X	12"	1.75-10
3	0.065	X	X	12"	1.75-10

**TOOLS FOR BENDING**  
**194 W. DAKOTA AVE**  
**DENVER, CO. 80223**

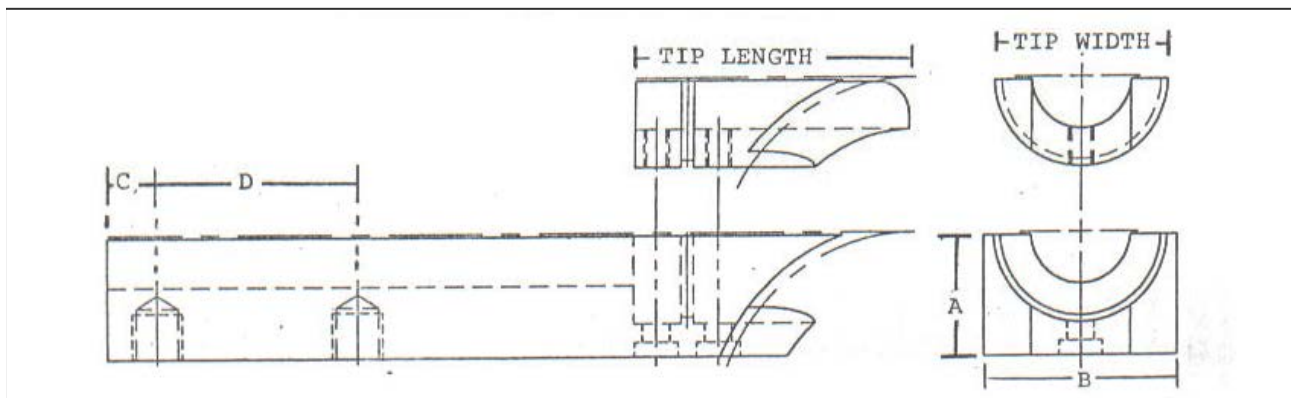
**STOCK WIPER TIP AND HOLDER PRICE LIST 12/00**

OD	WIPER TIP	WIPER HOLDER	TIP LENGTH	TIP WIDTH	"A"	"B"	LENGTH
1.000	\$49.00	\$195.00	2.74	1.750	1.250	2.000	8.0
1.250	\$49.00	\$195.00	2.74	1.750	1.250	2.000	8.0
1.375	\$49.00	\$195.00	2.99	1.750	1.250	2.000	8.0
1.500	\$46.00	\$220.00	3.62	2.375	1.500	2.500	8.0
1.625	\$49.00	\$220.00	3.62	2.375	1.500	2.500	8.0
1.750	\$49.00	\$250.00	3.62	2.375	1.500	2.500	8.0
1.875	\$49.00	\$250.00	3.99	2.375	1.500	2.500	8.0
2.000	\$52.00	\$280.00	4.49	2.875	2.000	3.000	8.0
2.125	\$52.00	\$280.00	4.49	2.875	2.000	3.000	8.0
2.250	\$63.00	\$320.00	4.49	2.875	2.000	3.000	8.0
2.375	\$63.00	\$320.00	4.49	2.875	2.000	3.000	8.0
2.500	\$73.00	\$360.00	4.99	3.125	2.500	4.000	8.0
3.000	\$104.00	\$470.00	4.99	3.625	2.500	4.000	12.0

STOCK TIPS AND HOLDERS MUST MEET THE FOLLOWING.  
 OTHER OPTIONS ARE CUSTOM. A FACTORY QUOTE IS REQUIRED.

- \*STEEL AND AMPCO-18 FOR TIPS ONLY. \*STEEL FOR HOLDER ONLY.
- \*3D OR LESS FOR CLR (CENTER LINE RADIUS). \*NO CAPTIVE LIP.
- \*WHEN FITTING TO A REVERSE INTERLOCK BEND DIE, TIP WIDTH MUST FIT WITHIN BEND DIE INTERLOCK RAILS.
- \*(HOLDER IN MOST CASES WILL BE CUSTOM).
- \*TWO EACH MOUNTING HOLES INCLUDED. (PLEASE VERIFY "C", "D" & THREADS)

DELIVERY: TIPS & HOLDER 2 WEEKS, TIPS ONLY 1-1/2 WEEKS.



## H-STYLE MANDRELS IN STOCK, CHROME AND AMPCO-18

LINKS	OD	WALL	SHANK	BALL
2	.375"	.028"	.312"	.307"
2	.375"	.035"	.296"	.291"
3	.50"	.028"	.437"	.434"
3	.50"	.035"	.412"	.416"
3	.50"	.049"	.390"	.385"
4	.625"	.028"	.562"	.557"
4	.625"	.035"	.546"	.541"
4	.625"	.049"	.515"	.510"
5	.75"	.028"	.687"	.684"
5	.75"	.035"	.671"	.666"
5	.75"	.042"	.656"	.651"
5	.75"	.049"	.640"	.635"
5	.75"	.065"	.604"	.599"
5	.875"	.028"	.812"	.809"
5	.875"	.035"	.796"	.791"
5	.875"	.049"	.765"	.760"
6	1.00"	.028"	.937"	.934"
6	1.00"	.035"	.921"	.916"
6	1.00"	.049"	.890"	.885"
6	1.00"	.065"	.854"	.849"
7	1.25"	.028"	1.187"	1.182"
7	1.25"	.035"	1.171"	1.166"
7	1.25"	.049"	1.140"	1.135"
7	1.25"	.065"	1.104"	1.099"
8	1.50"	.028"	1.437"	1.432"
8	1.50"	.035"	1.421"	1.416"
8	1.50"	.049"	1.390"	1.385"
8	1.50"	.065"	1.354"	1.349"
8	1.50"	.083"	1.313"	1.308"
8	1.625"	.049"	1.515"	1.510"
8	1.625"	.065"	1.479"	1.474"
9	1.75"	.035"	1.671"	1.666"
9	1.75"	.049"	1.640"	1.635"
9	1.75"	.065"	1.604"	1.599"
9	2.00"	.035"	1.921"	1.916"
9	2.00"	.049"	1.890"	1.885"
9	2.00"	.065"	1.854"	1.849"
10	2.25"	.049"	2.140"	2.135"
10	2.25"	.065"	2.104"	2.099"
10	2.50"	.049"	2.390"	2.385"
10	2.50"	.065"	2.354"	2.349"
11	3.00"	.065"	2.854"	2.849"