

T-DRILL

TEC-150 HD

Heavy Duty collaring station



IT'S THE TOOLS
THAT SAY HOW GOOD YOU ARE.

TEC-150 HD

HEAVY DUTY COLLARING STATION

The T-Drill TEC-150 Heavy Duty Collaring Station - stronger and easier than ever

Newly designed TEC-150 HD Collaring Station is able to process extruded outlet for branch connection directly from run tube material. Entire process from pilot hole milling to a complete, beveled branch can be performed in a single workstation.

Collars can be formed in most ductile metals, including stainless steel, carbon steel, copper/nickel, brass and aluminum. Depending the material thickness and elongation, collars can be made for SCH 40 pipes according to the table below.



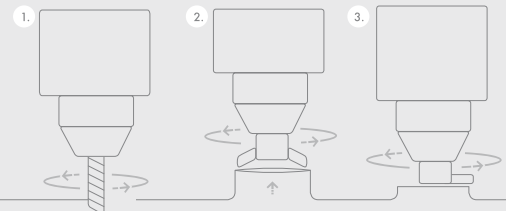
TEC-150 HD Capacity

RUN TUBE OUTSIDE DIAMETER IN mm (N.S. inch)	BRANCH TUBE OUTSIDE DIAMETER IN mm (N.S. inch)												
	21,3 1/2	26,9 1	33,7 1 1/4	42,4 1 1/2	48,3 1 3/4	60,3 2	76,1 2 1/2	88,9 3	101,6 3 1/2	114,3 4	141,3 5	168,3 6	219,1 ⁽¹⁾ 8
33,7 1	2,8 0.110	2,8 0.110	3,2 ⁽²⁾ 0.126	---	---	---	---	---	---	---	---	---	---
42,4 1 1/2	3,0 0.118	3,0 0.118	3,5 0.138	3,5 ⁽²⁾ 0.138	---	---	---	---	---	---	---	---	---
48,3 1 1/2	3,0 0.118	3,0 0.118	3,5 0.138	3,5 0.138	3,5 ⁽²⁾ 0.138	---	---	---	---	---	---	---	---
60,3 2	3,0 0.118	3,0 0.118	3,8 0.149	3,8 0.149	3,8 0.149	3,91 ⁽²⁾ 0.154	---	---	---	---	---	---	---
76,1 2 1/2	3,0 0.118	3,0 0.118	4,2 0.165	4,2 0.165	4,2 0.165	5,16 0.203	5,16 ⁽²⁾ 0.203	---	---	---	---	---	---
88,9 3	3,0 0.118	3,0 0.118	4,2 0.165	4,2 0.165	4,2 0.165	5,49 0.216	5,49 ⁽²⁾ 0.216	---	---	---	---	---	---
101,6 3 1/2	3,0 0.118	3,0 0.118	4,2 0.165	4,2 0.165	4,2 0.165	5,74 0.225	5,74 0.225	5,74 0.225	5,74 ⁽²⁾ 0.225	---	---	---	---
114,3 4	3,0 0.118	3,0 0.118	4,2 0.165	4,5 0.177	4,2 0.165	6,02 0.237	6,02 0.237	6,02 0.237	6,02 0.237	6,02 ⁽²⁾ 0.237	---	---	---
141,3 5	3,0 0.118	3,0 0.118	4,2 0.165	4,5 0.177	4,5 0.177	6,02 0.237	6,55 0.257	6,55 0.257	6,55 0.257	6,55 0.257	6,55 ⁽²⁾ 0.257	---	---
168,3 6	3,0 0.118	3,0 0.118	4,2 0.165	4,5 0.177	4,5 0.177	6,02 0.237	6,55 0.257	7,11 0.279	7,11 0.279	7,11 0.279	7,11 0.279	7,11 ⁽²⁾ 0.279	---
219,1 8	3,0 0.118	3,0 0.118	4,2 0.165	4,5 0.177	4,5 0.177	6,02 0.237	6,55 0.257	7,11 0.279	8,18 0.322	8,18 0.322	8,18 0.322	8,18 0.322	4,0 ⁽²⁾ 0.157
273,0 10	3,0 0.118	3,0 0.118	4,2 0.165	4,5 0.177	4,5 0.177	6,02 0.237	6,55 0.257	7,11 0.279	8,18 0.322	8,18 0.322	9,27 0.364	9,27 0.364	4,0 0.157
323,9 12	3,0 0.118	3,0 0.118	4,2 0.165	4,5 0.177	4,5 0.177	6,02 0.237	6,55 0.257	7,11 0.279	8,18 0.322	8,18 0.322	10,31 0.405	10,31 0.405	4,0 0.157
355,6 14	3,0 0.118	3,0 0.118	4,2 0.165	4,5 0.177	4,5 0.177	6,02 0.237	6,55 0.257	7,11 0.279	8,18 0.322	8,18 0.322	10,31 0.405	10,31 0.405	4,0 0.157
406,4 16	3,0 0.118	3,0 0.118	4,2 0.165	4,5 0.177	4,5 0.177	6,02 0.237	6,55 0.257	7,11 0.279	8,18 0.322	8,18 0.322	10,31 0.405	10,31 0.405	4,0 0.157

1) Optionally, we also have a TEC-150 version for forming up to 219,1 mm (8") collars, for additional information contact T-Drill sales personnel
 2) On 1:1 cases contact T-Drill sales personnel

T-DRILL PROCESS

T-DRILL Collaring method for pipe branching is applicable to almost all malleable materials
 1. Milling 2. Collaring 3. Trimming



MANUFACTURER:



P.O.Box 20, FIN-66401 LAIHIA, Finland
 Tel.+358 6 475 3333
 Telefax +358 6 475 3300
 e-mail: sales@t-drill.fi
 www.t-drill.fi

REPRESENTED BY:

