

**T-DRILL**

PRODUCTIVITY AS A PRODUCT.

**NEW!**



# **COLLARING MACHINE**

Portable Heavy Duty Collaring Machine for Stainless Steel pipes

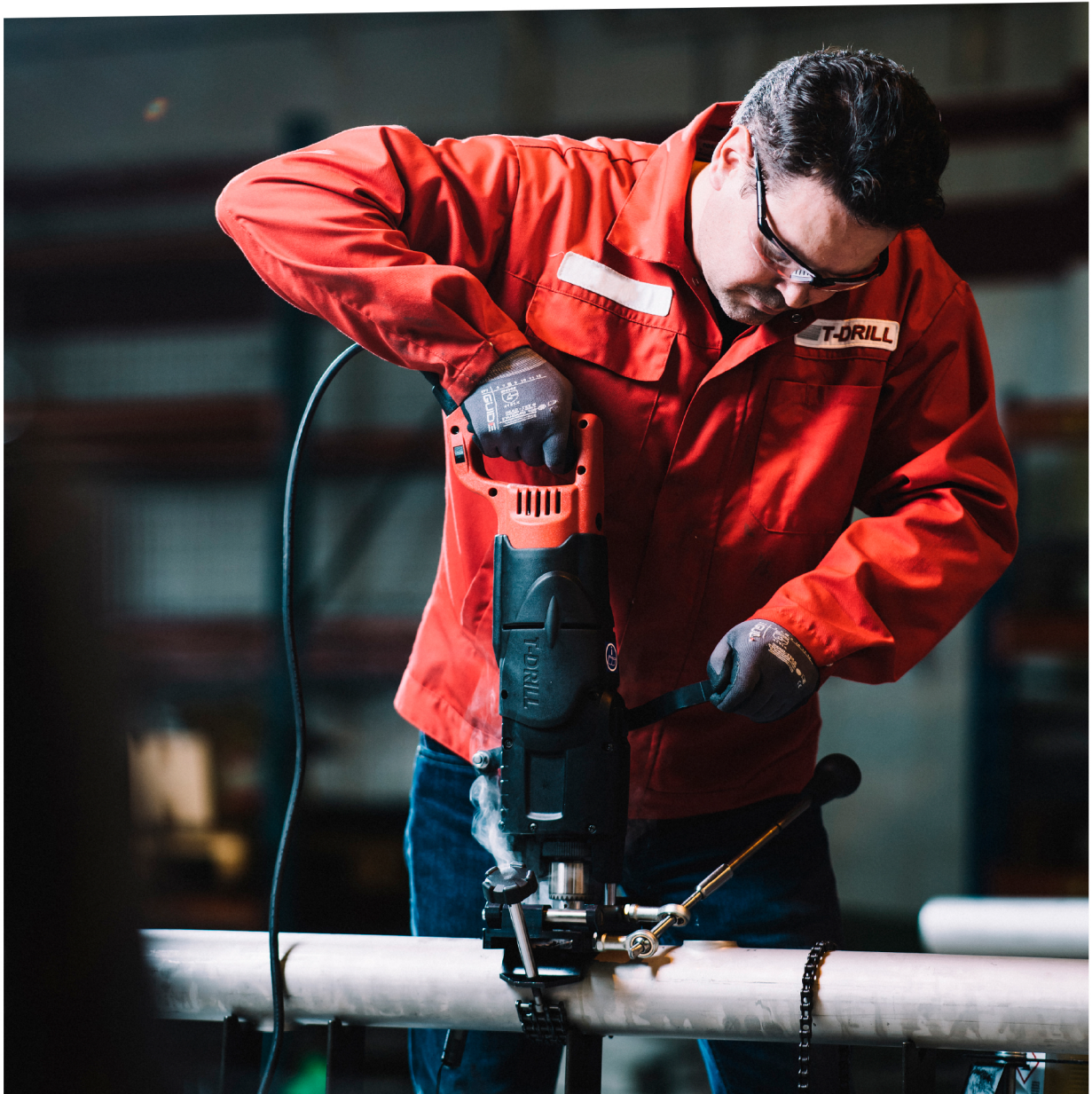
**T-65 SS**

**T-65B SS**

## **T-65 SS & T-65B SS HEAVY DUTY TEE FORMING MACHINE**

The powerful **T-DRILL T-65 SS** is an ideal portable solution for making tee joints of O.D. 17 - 54 mm in main run tubes up to 300 mm in just a couple of minutes. While giving comparable quality to commercial tee fittings, the profit will increase since the **T-65 SS** eliminates cutting of pipe, two welded joints and the fitting cost.

If tube polishing is required at the welding points, the **T-65 SS** also reduces that, as well as any inspection costs. The branch pipe can be connected to a formed outlet either by orbital welding or by manual welding.



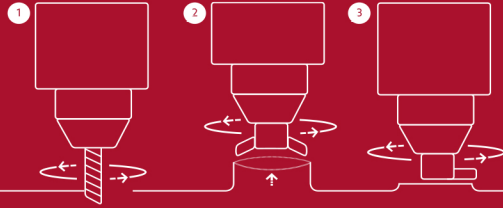


## THE T-DRILL PROCESS

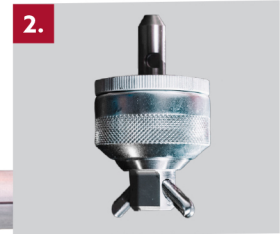
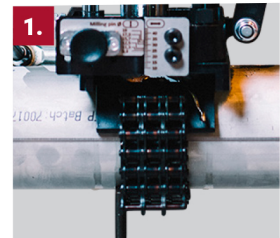
1. Pilot hole milling

2. Collaring

3. Trimming



### T-65 Stainless Steel for 17–54 mm branching



The **T-65 SS** is an excellent solution to be used both in construction and renovation projects, as well as in the demanding field conditions in maintenance, repair work and the process industry.

**1.** The machine has a universal clamping system for run tubes 25–114 mm with easy pilot hole adjustment.

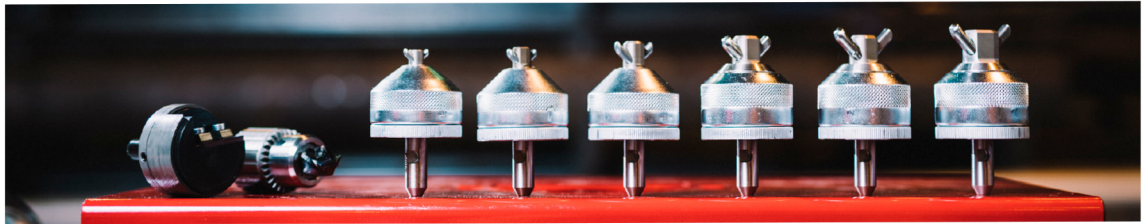
**2.** The T-DRILL collaring heads with stepless adjustment ensures exactly precise collar sizes.

**3.** The T-65 SS is easy and convenient to use, as it has two handles; the upper one for drilling through and the other one for pilot hole side movement.

**4.** The machine is available also as a cordless T-65B SS 28V Lithium-Ion version for even easier handling.

## Specifications

## T-65 SS/T-65B SS



### T-65 SS Capacity

		Branch tube outside diameter						
		mm	17,2	21,3	26,9	33,7	42,4	48,3
Run tube outside diameter	Tee range	17-19	20-25	25-30	30-34	34-44	45-54*	
	26,9	2,0	2,0	1,6				
	33,7	2,0	2,77	2,77	1,6	-	-	
	42,4	2,0	2,77	2,77	2,77	1,6	-	
	48,3	2,0	2,77	2,77	2,77	2,77	1,6	
	60,3	2,0	2,77	2,77	2,77	2,77	2,77	
	76,1	2,0	3,05	3,05	3,05	3,05	3,05	
	88,9	2,0	3,05	3,05	3,05	3,05	3,05	
	114,3	2,0	3,05	3,05	3,05	3,05	3,05	
	≤ 300	With optional clamping system						

### Cordless T-65B SS Capacity

		Branch tube outside diameter						
		mm	17,2	21,3	26,9	33,7	42,4	48,3
Run tube outside diameter	Tee range	17-19	20-25	25-30	30-34	34-44	45-54	
	26,9	2,0	2,0	1,6				
	33,7	2,0	2,0	2,0	1,6	-	-	
	42,4	2,0	2,0	2,0	2,0	1,6	-	
	48,3	2,0	2,0	2,0	2,0	2,0	1,6	
	60,3	2,0	2,0	2,0	2,0	2,0	2,0	
	76,1	2,0	2,0	2,0	2,0	2,0	2,0	
	88,9	2,0	2,0	2,0	2,0	2,0	2,0	
	114,3	2,0	2,0	2,0	2,0	2,0	2,0	
	≤ 300	With optional clamping system						

Max. wall thickness of stainless steel pipe (mm)

\* Over 51 mm O.D. max. wall thickness 2,0 mm

## DO IT WITH T-DRILL

Cut costs – Improve quality – Increase profit

- No T-fittings
- No costly inventories
- No tube cutting

- Only one welded joint
- Minimized inspection cost
- Tee ratio variation flexibility

- Smaller risk of leakage
- Optimized flow-characteristics
- Hygienic, clean weld points